

ANTI THEFT

SAMURAI™

Universal Wheel Clamp



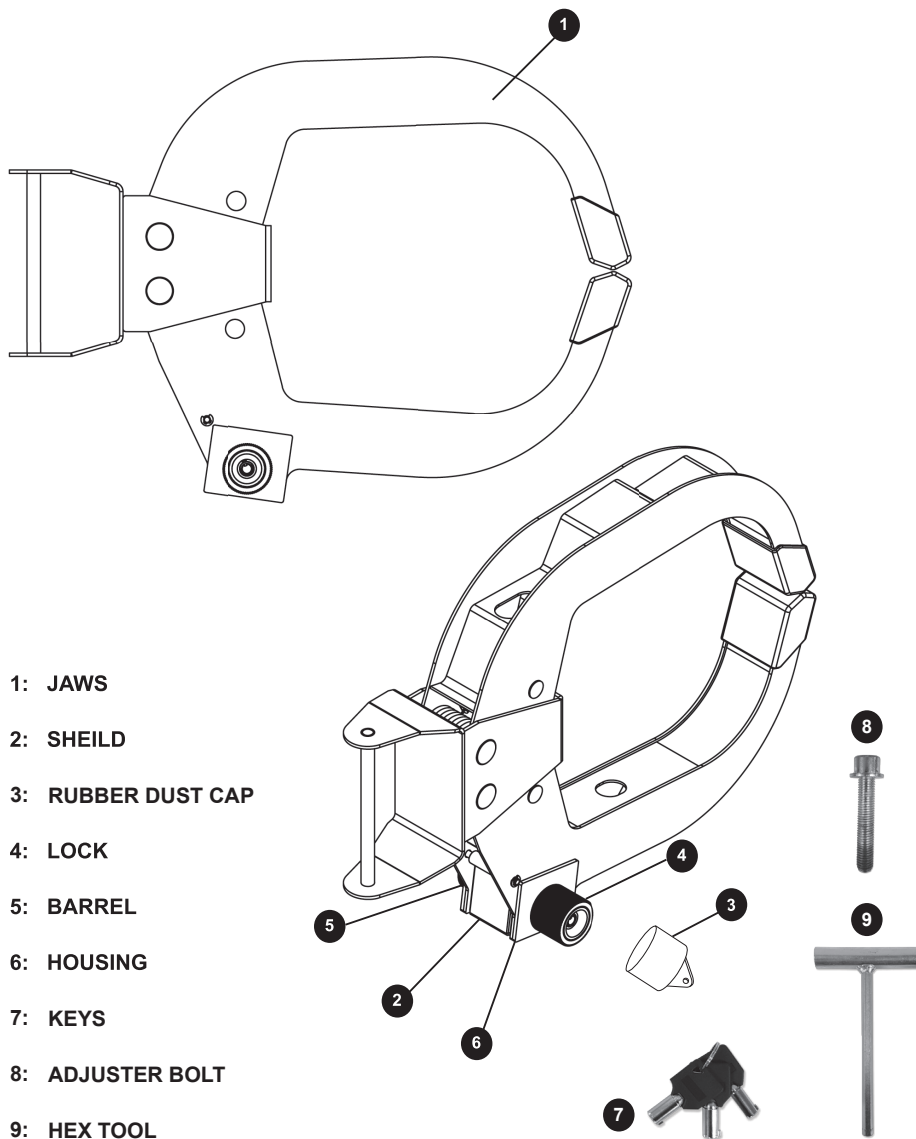
**PLEASE READ THIS
MANUAL BEFORE FIRST
USE. TIME INVESTED IN
CORRECT FITMENT IS
REPAID IN THE LEVEL
OF SECURITY THAT IS
ACHIEVED.**

User Manual

Product Code: CSK100

 **purpleline®**
design...innovate...improve

SAMURAI® WHEEL CLAMP COMPONENT IDENTIFICATION



SAMURAI WHEEL CLAMP USAGE

The **Purple Line® Samurai Wheel Clamp** is designed to fit around and lock onto the wheel to prevent the vehicle being driven away. It is engineered to fit most on and off road wheel and tyre combinations for;

- Cars
- 4WD's
- Light Commercial Vehicles
- Motorhomes
- Caravans
- Camper Trailers
- Boat Trailers
- Horse Floats
- General Trailers

The **Purple Line® Samurai Wheel Clamp** is made from specially hardened high strength steel which is resistant to cutting and drilling.

For added security the **Purple Line® Samurai Wheel Clamp** incorporates a high-security, 7 PIN barrel lock, resistant to picking, drilling and gas freezing.

SAMURAI WHEEL CLAMP MAINTENANCE

On a regular basis apply either a clear silicone lubricant or petroleum jelly to the Lock to aid lubrication and functionality of the lock.

Failure to do this will result in the lock ceasing.

SAMURAI WHEEL CLAMP USER INSTRUCTIONS

To view these fitting instructions online via video visit:

<http://www.purpleline.com.au/products-samurai-installation-video.php>

UNLOCK:

- Insert the Key into the Lock.
- Push the Key down into the Lock and turn the Key 90° clockwise to unlock.
- Remove the Lock and the Barrel from the Housing.
- Remove the Shield.

FITMENT:

- Insert the Hex Tool into the Adjuster Bolt and turn the Hex Tool anti-clockwise to open the Jaws.
- Samurai can be installed at the front or rear of the wheel, the most effective installation being at the front.
- Place Jaws around the wheel as per Image 2.
- Insert the Hex Tool into the Adjuster Bolt and turn the Hex Tool clockwise to close the Jaws around the wheel as per Image 3.
- Fit the Shield to the Housing.
- Insert the Barrel into the Housing, which will cause it to pass through the Shield.
- Insert the Lock into the Barrel by rotating it and pushing it down until it slots into place. (note: there is a nodule on the Lock designed to align with a notch located on the inside of the Barrel as per image 4).
- Turn the Key 90° anti-clockwise and remove.
- The **Purple Line® Samurai Wheel Clamp** is now secure.

CAUTION: Please store keys in a safe environment.



SAMURAI WHEEL CLAMP — DISCLAIMER

When the **Purple Line® Samurai Wheel Clamp** is fitted correctly it is an effective deterrent to prevent the theft of a vehicle.

However, as with all products designed to prevent theft they will not prevent a determined or professional thief from stealing a vehicle.

Additionally the **Purple Line® Samurai Wheel Clamp** is not designed to use as a wheel chock or for any other purpose than stated.

Accordingly, Purple Line P/L. will not accept any liability for any loss or damage which may result from an attempted or realised theft. Additionally, no liability will be accepted from the improper fitment, use or misuse, maintenance and unauthorised modification or repair of the **Purple Line® Samurai Wheel Clamp** and any consequential loss that may result.

Photographs used are for illustration purposes only and may differ for the product. Purple Line reserves the right to alter product specifications without prior notice.

SAMURAI WHEEL CLAMP — WARRANTY POLICY

The **Purple Line® Samurai Wheel Clamp** is guaranteed for 24 months from date of purchase and subject to Australian Consumer Law.

Purple Line warrants the **Purple Line® Samurai Wheel Clamp** is supplied free of defects.

Refund: The Goods will be refunded if not fit for purpose.

Replaced: The Goods will be replaced if defects were apparent upon purchase or a major failure occurs, which cannot be repaired.

Repair: The Goods will be repaired in the event of failure. Goods presented for repair may be repaired or replaced by refurbished goods or parts of a similar type.

Contacts: To make a warranty claim first contact the retailer the Goods were purchased from and if purchased online Purple Line
<http://www.purpleline.com.au/contact.php>

To activate your warranty please go to:

<http://www.purpleline.com.au/product-registration.php>

and register the product online.

ANTI THEFT

SAMUCAI™
Universal Wheel Clamp



purpleline®

design...innovate...improve

Purple Line® Pty Ltd
12 Capital Court
Braeside VIC 3195

T: +61 (3) 9588 2959
E: enquiries@purpleline.com.au
W: www.purpleline.com.au